

**STC2 antibody - C-terminal region**  
**Rabbit Polyclonal Antibody**  
**Catalog # AI15069**

**Specification**

---

**STC2 antibody - C-terminal region - Product Information**

Application	WB
Primary Accession	<a href="#">O76061</a>
Other Accession	<a href="#">NM_003714</a> , <a href="#">NP_003705</a>
Reactivity	Human, Mouse, Rat, Rabbit, Pig, Yeast, Bovine, Guinea Pig, Dog
Predicted	Human, Mouse, Rat, Rabbit, Pig, Yeast, Bovine, Guinea Pig, Dog
Host	Rabbit
Clonality	Polyclonal
Calculated MW	31kDa KDa

**STC2 antibody - C-terminal region - Additional Information**

**Gene ID** 8614

**Alias Symbol** STC-2, STCRP

**Other Names**

Stanniocalcin-2, STC-2, Stanniocalcin-related protein, STC-related protein, STCRP, STC2

**Format**

Liquid. Purified antibody supplied in 1x PBS buffer with 0.09% (w/v) sodium azide and 2% sucrose.

**Reconstitution & Storage**

Add 50 ul of distilled water. Final anti-STC2 antibody concentration is 1 mg/ml in PBS buffer with 2% sucrose. For longer periods of storage, store at 20°C. Avoid repeat freeze-thaw cycles.

**Precautions**

STC2 antibody - C-terminal region is for research use only and not for use in diagnostic or therapeutic procedures.

**STC2 antibody - C-terminal region - Protein Information**

**Name** STC2

**Function**

Has an anti-hypocalcemic action on calcium and phosphate homeostasis.

**Cellular Location**

Secreted.

**Tissue Location**

Expressed in a variety of tissues including muscle, heart, pancreas, kidney, spleen, prostate, small

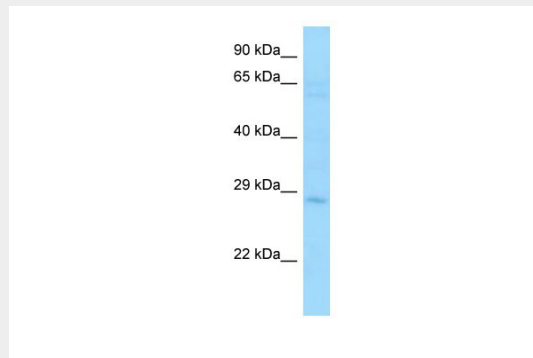
intestine, colon and peripheral blood leukocytes

### STC2 antibody - C-terminal region - Protocols

Provided below are standard protocols that you may find useful for product applications.

- [Western Blot](#)
- [Blocking Peptides](#)
- [Dot Blot](#)
- [Immunohistochemistry](#)
- [Immunofluorescence](#)
- [Immunoprecipitation](#)
- [Flow Cytometry](#)
- [Cell Culture](#)

### STC2 antibody - C-terminal region - Images



WB Suggested Anti-STC2 Antibody Titration: 1.0 µg/ml

Positive Control: MCF7 Whole Cell  
STC2 is strongly supported by BioGPS gene expression data to be expressed in Human MCF7 cells

### STC2 antibody - C-terminal region - References

- Chang A.C.-M., et al. Mol. Cell. Endocrinol. 141:95-99(1998).  
Ishiabshi K., et al. Biochem. Biophys. Res. Commun. 250:252-258(1998).  
DiMattia G.E., et al. Mol. Cell. Endocrinol. 146:137-140(1998).  
Moore E.E., et al. Horm. Metab. Res. 31:406-414(1999).  
Kalnina N., et al. Submitted (OCT-2004) to the EMBL/GenBank/DDBJ databases.